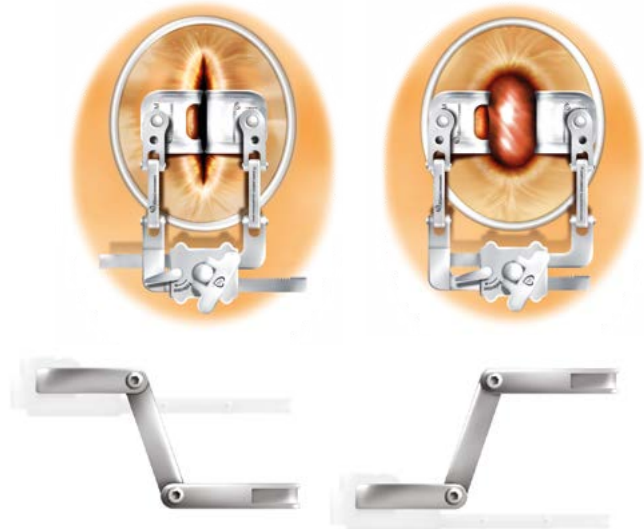
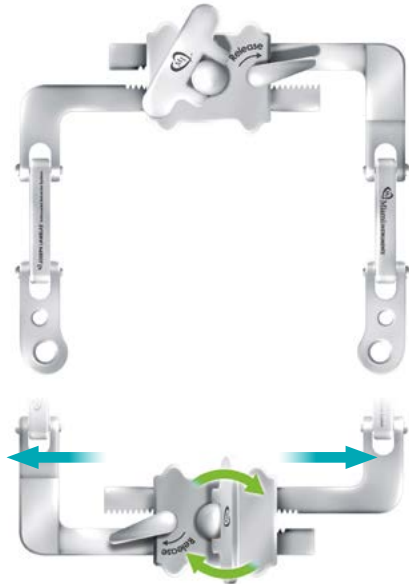


# JOSEPH LAMELAS® Intercostal Retractor System

**DESIGNED TO DECREASE THE FOOTPRINT OF MICS PROCEDURES WHILE INCREASING ACCESS AND EXPOSURE.**

## RETRACTOR RACK AND ARMS

Low profile is designed to decrease the footprint, increase access and enhance working space and field organization efficiencies during MICS procedures.

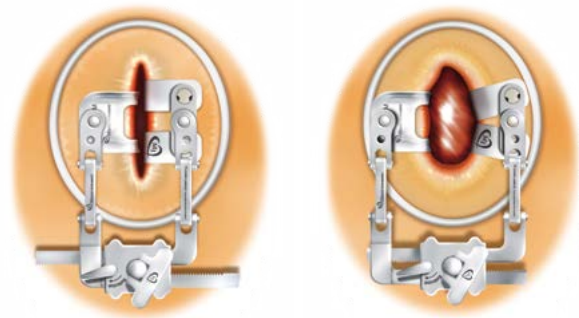


Triple-segmented arm design enables contouring consistency with underlying anatomical and operative site variability.

Bilateral arm movement promotes equivalent distribution of incremental retraction within the intercostal space. Minimized gear spacing is designed to enhance control and precision of incremental retraction within the intercostal space.

## DOUBLE SWIVEL BLADES

Double swivel design enhances the overall blade's ability to conform to varying curvatures encountered during the different stages of retraction.



Double swivel design facilitates independent pivoting capability of the separated halves of the blade.

Concave longitudinal blade geometry enhances target tissue capture and retention, while independent pivoting capability promotes flush interface and even distribution of retraction force along the contoured site of engagement.

## PAIRED STANDARD BLADES

Flared outer edge design increases blade tensile strength and resistance to bending.

Concave longitudinal geometry improves tissue capture and retention capability during retraction.

Cutout is designed to enhance access area and minimizes instrument obstruction within the working field. Four size options (small, medium, large and extra large) to accommodate anatomical variances.



## STERILIZATION TRAY

Customized for convenient instrument storage and enables efficient product identification.

Pre-configured base design for efficient component organization.

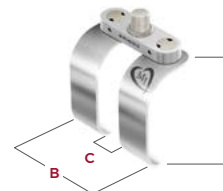
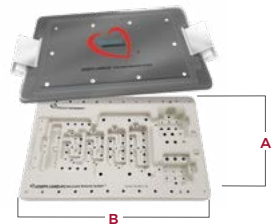
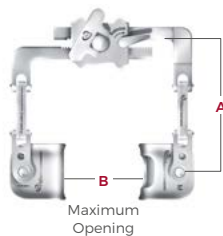


### KIT ORDERING INFORMATION

ORDER #	DESCRIPTION
MI-IRS-222	JOSEPH LAMELAS INTERCOSTAL RETRACTOR SYSTEM (1 System Kit per Box - System Kit includes all components)

### ACCESSORY COMPONENT ORDERING INFORMATION AND DEVICE SPECIFICATIONS

CATALOG #	COMPONENT PART #	DESCRIPTION	A (CM)	B (CM)	C (CM)
MI-IRS-R-001	MI-IRS-R-001 HEX-2M	Retractor Rack 2mm Hex Key	6.9	13.5	-
MI-IRS-SB-P01	MI-IRS-SBS-01 MI-IRS-SBC-01	Small Blade Pair (Solid) (Cut Out)	4 4	3.5 3.5	- -
MI-IRS-MB-P01	MI-IRS-MBS-01 MI-IRS-MBC-01	Medium Blade Pair (Solid) (Cut Out)	5 5	3.8 3.8	- -
MI-IRS-LB-P01	MI-IRS-LBS-01 MI-IRS-LBC-01	Large Blade Pair (Solid) (Cut Out)	6.5 6.5	3.9 3.9	- -
MI-IRS-XLB-P01	MI-IRS-XLBS-01 MI-IRS-XLBC-01	Extra Large Blade Pair (Solid) (Cut Out)	8 8	4.1 4.1	- -
MI-IRS-SDSB-22	MI-IRS-SDSB-22	Small Double Swivel Blade	4	4.6	1
MI-IRS-MDSB-22	MI-IRS-MDSB-22	Medium Double Swivel Blade	5	5.1	1.5
MI-IRS-T-22	MI-IRS-T-22	Sterilization Tray	24	37.5	-



**INDICATIONS:** The Joseph Lamelas INTERCOSTAL RETRACTOR SYSTEM product is intended to provide surgical access for minimally invasive cardiothoracic procedures by retraction of soft and bony tissue.

**CONTRAINDICATIONS:** This device is not intended to be used in sternotomy applications.

**WARNINGS AND PRECAUTIONS:** Proper surgical procedures and techniques are the responsibility of the medical professional.

Each surgeon must evaluate the appropriateness of any procedure based on their own medical training and experience, and the type of surgical procedure. Refer to the product Instructions for Use manual (IFU) for cleaning, sterilization and maintenance information.

For additional information please refer to the Instructions for Use provided with the product.

**NOTE:** This device is not intended to be used in either full or mini sternotomy applications. **CAUTION:** Federal law (USA) restricts this device to sale by or on the order of a physician.